

NHA Hospital Capacity Situational Awareness Update

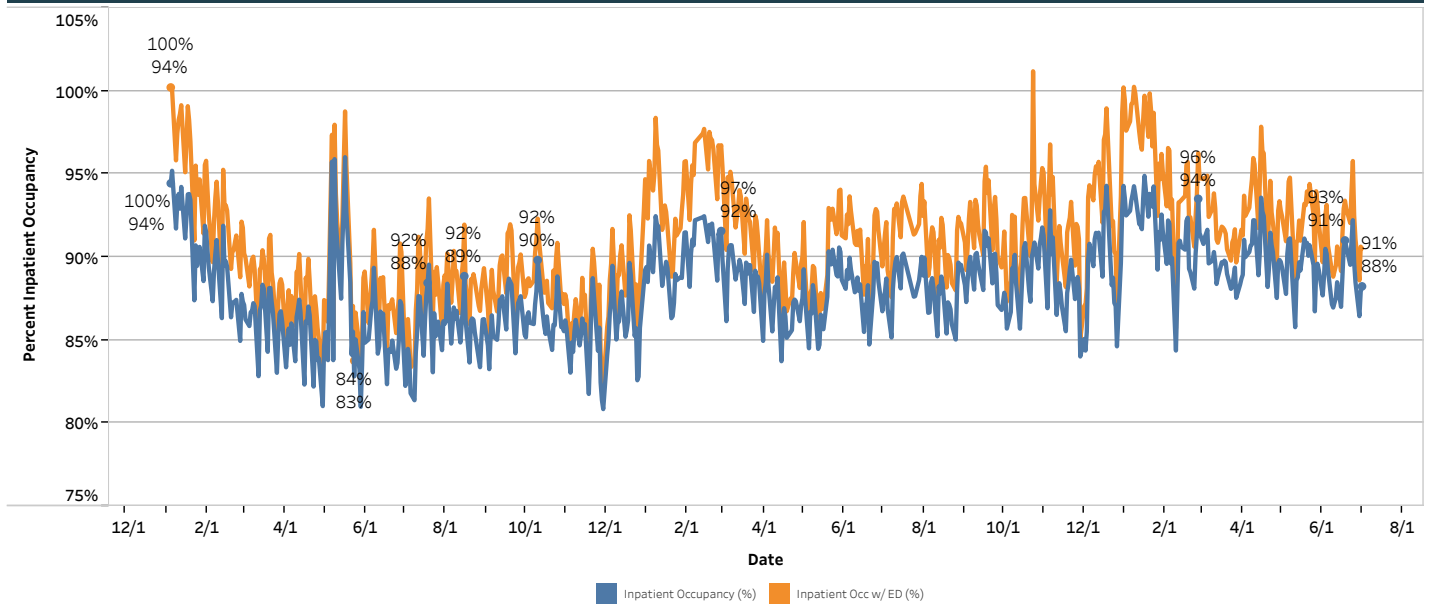
Weekdays June 25 - July 1, 2026

Hospital Census

	Staffed Bed Status				
	June 25	June 26	June 29	June 30	July 1
Total Staffed Inpatient Beds Filled	2,475	2,452	2,410	2,467	2,475
Total Staffed Inpatient Beds Available*	286	319	378	339	330
Inpatient Occupancy	89.6%	88.5%	86.4%	87.9%	88.2%
Inpatient Occupancy with ED Holds**	92.5%	91.1%	88.6%	90.6%	90.5%

Note:
 * Does not include available ED beds
 **Does not include behavioral health holds

2024 – 2026 Hospital Inpatient Capacity



Emergency Department Holds

	June 25	June 26	June 29	June 30	July 1
Non-Behavioral Health	79	72	60	76	64
Psych Adult ED Holds	44	38	35	30	31
Psych Pedi ED Holds	4	5	9	7	7

Source: Juvare
 30 hospitals reporting