

NHA Hospital Capacity Situational Awareness Update

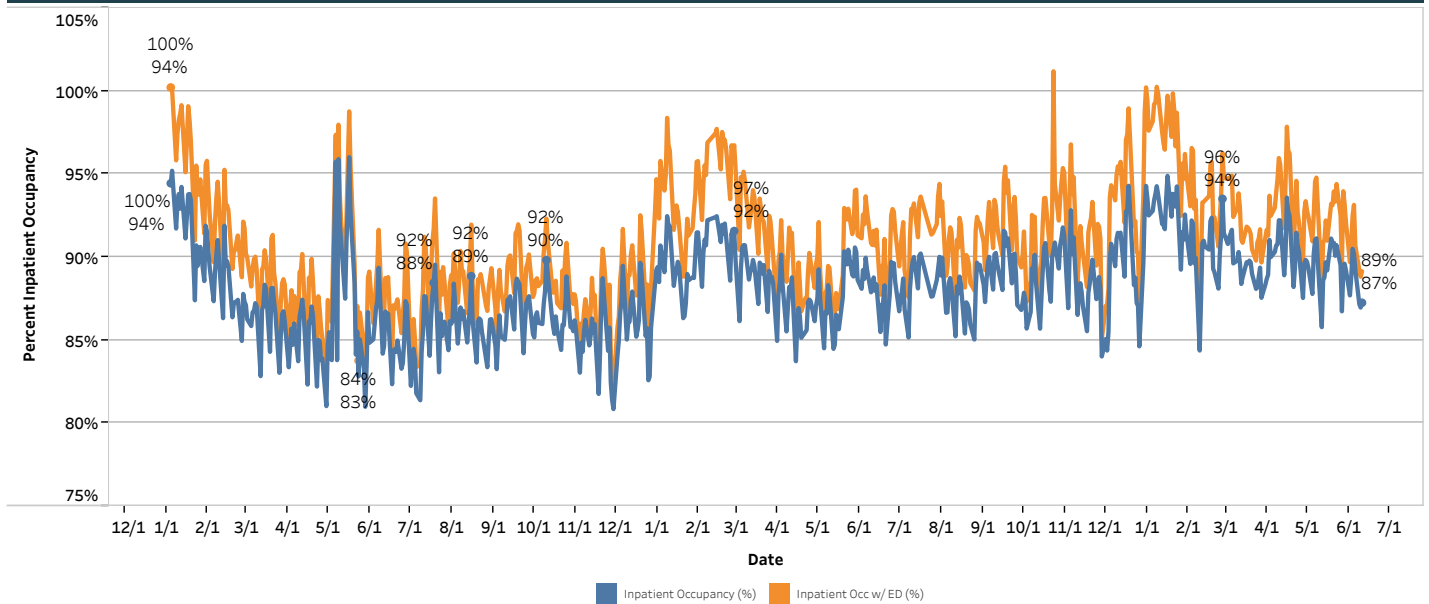
Weekdays June 4 - June 10, 2026

Hospital Census

	Staffed Bed Status				
	June 4	June 5	June 8	June 9	June 10
Total Staffed Inpatient Beds Filled	2,512	2,477	2,417	2,434	2,436
Total Staffed Inpatient Beds Available*	273	299	356	365	356
Inpatient Occupancy	90.2%	89.2%	87.2%	87.0%	87.2%
Inpatient Occupancy with ED Holds**	93.1%	90.7%	89.2%	88.8%	89.1%

Note:
 * Does not include available ED beds
 ** Does not include behavioral health holds

2024 – 2026 Hospital Inpatient Capacity



Emergency Department Holds

	June 4	June 5	June 8	June 9	June 10
Non-Behavioral Health	82	41	56	52	53
Psych Adult ED Holds	36	38	39	36	27
Psych Pedi ED Holds	10	11	12	6	7

Source: Juvare
 30 hospitals reporting