

NHA Hospital Capacity Situational Awareness Update

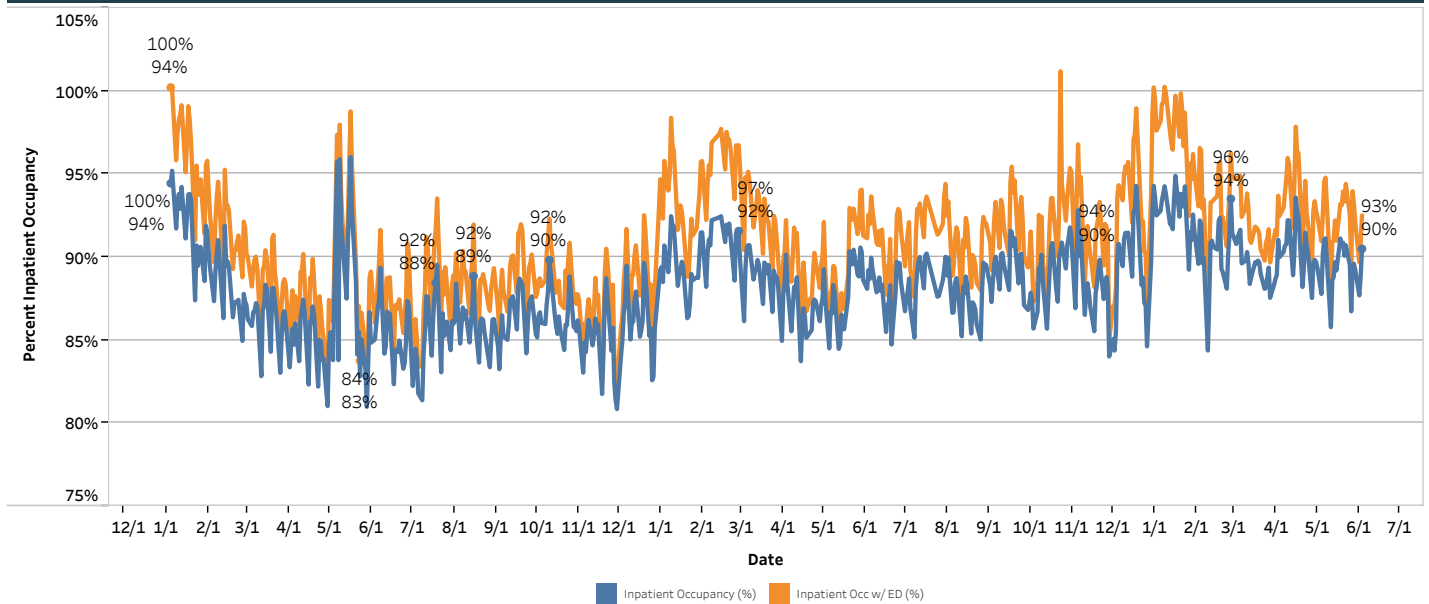
Weekdays May 28 - June 3, 2026

Hospital Census

	Staffed Bed Status				
	May 28	May 29	June 1	June 2	June 3
Total Staffed Inpatient Beds Filled	2,507	2,482	2,415	2,460	2,514
Total Staffed Inpatient Beds Available*	291	300	339	309	264
Inpatient Occupancy	89.6%	89.2%	87.7%	88.8%	90.5%
Inpatient Occupancy with ED Holds**	93.2%	92.1%	89.7%	90.9%	92.5%

Note:
 * Does not include available ED beds
 **Does not include behavioral health holds

2024 – 2026 Hospital Inpatient Capacity



Emergency Department Holds

	May 28	May 29	June 1	June 2	June 3
Non-Behavioral Health	101	80	55	58	56
Psych Adult ED Holds	35	33	49	44	38
Psych Pedi ED Holds	8	8	7	10	9

Source: Juvare
 30 hospitals reporting