

# NHA Hospital Capacity Situational Awareness Update

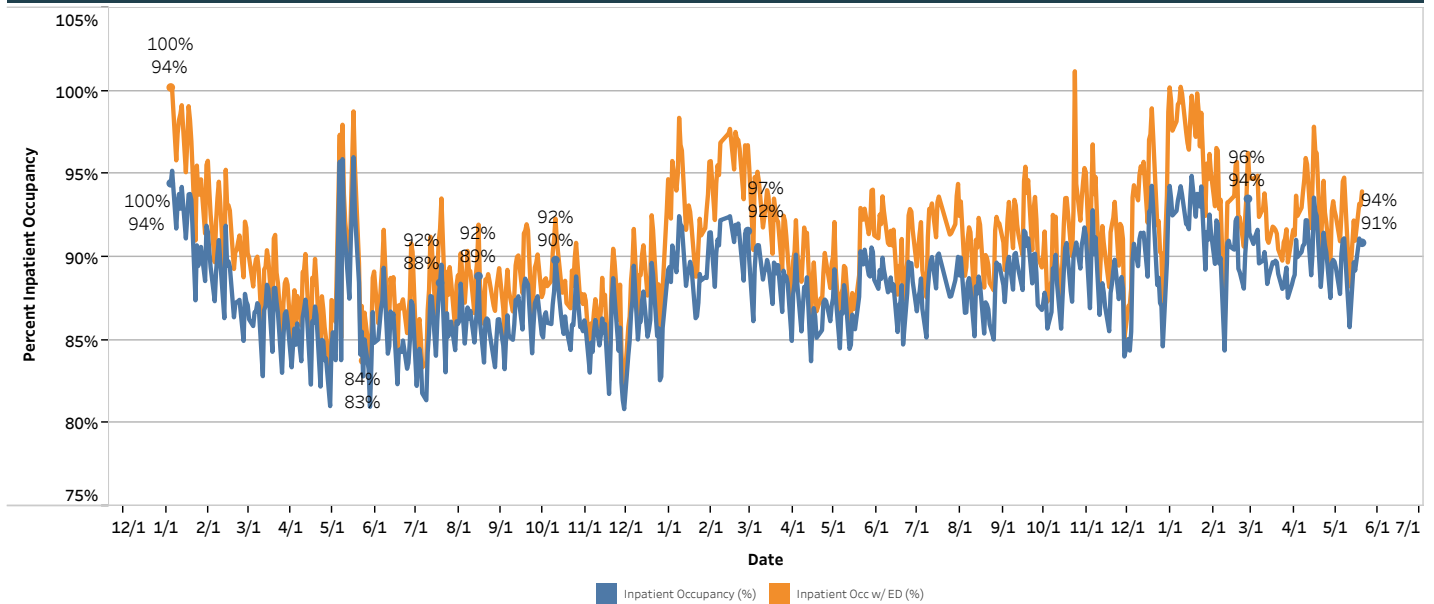
## Weekdays May 14 - May 20, 2026

### Hospital Census

	Staffed Bed Status				
	May 14	May 15	May 18	May 19	May 20
<b>Total Staffed Inpatient Beds Filled</b>	2,496	2,484	2,575	2,560	2,555
<b>Total Staffed Inpatient Beds Available*</b>	287	301	251	260	257
<b>Inpatient Occupancy</b>	89.7%	89.2%	91.1%	90.8%	90.9%
<b>Inpatient Occupancy with ED Holds**</b>	92.2%	91.0%	93.2%	93.1%	94.0%

Note:  
 \* Does not include available ED beds  
 \*\*Does not include behavioral health holds

### 2024 – 2026 Hospital Inpatient Capacity



### Emergency Department Holds

	May 14	May 15	May 18	May 19	May 20
<b>Non-Behavioral Health</b>	70	50	59	66	87
<b>Psych Adult ED Holds</b>	34	30	47	48	46
<b>Psych Pedi ED Holds</b>	7	10	10	8	9

Source: Juvare  
 30 hospitals reporting