

NHA Hospital Capacity Situational Awareness Update

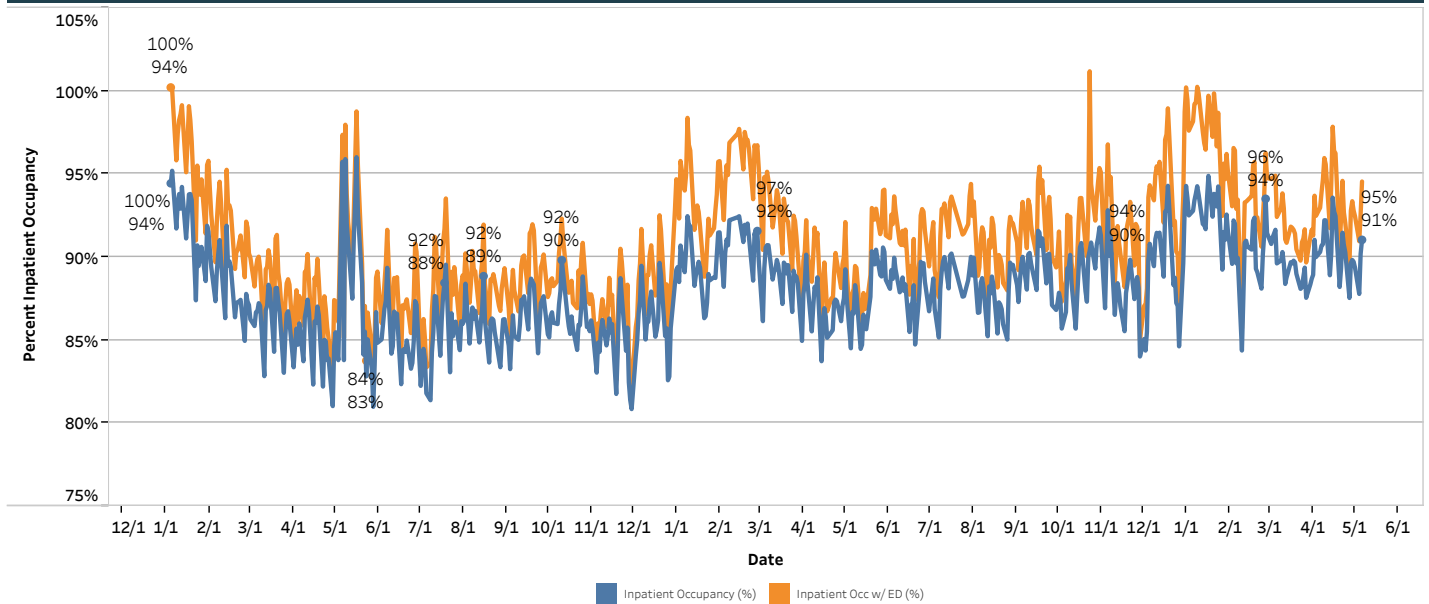
Weekdays April 30 - May 6, 2026

Hospital Census

| | Staffed Bed Status | | | | |
|--|--------------------|-------|-------|-------|-------|
| | April 30 | May 1 | May 4 | May 5 | May 6 |
| Total Staffed Inpatient Beds Filled | 2,503 | 2,484 | 2,435 | 2,510 | 2,539 |
| Total Staffed Inpatient Beds Available* | 287 | 296 | 339 | 273 | 250 |
| Inpatient Occupancy | 89.7% | 89.4% | 87.8% | 90.2% | 91.0% |
| Inpatient Occupancy with ED Holds** | 92.8% | 92.4% | 91.0% | 92.6% | 94.6% |

Note:
 * Does not include available ED beds
 **Does not include behavioral health holds

2024 – 2026 Hospital Inpatient Capacity



Emergency Department Holds

| | April 30 | May 1 | May 4 | May 5 | May 6 |
|------------------------------|----------|-------|-------|-------|-------|
| Non-Behavioral Health | 86 | 86 | 88 | 66 | 98 |
| Psych Adult ED Holds | 35 | 28 | 46 | 49 | 43 |
| Psych Pedi ED Holds | 6 | 6 | 12 | 13 | 10 |

Source: Juvare
 30 hospitals reporting