

# NHA Hospital Capacity Situational Awareness Update

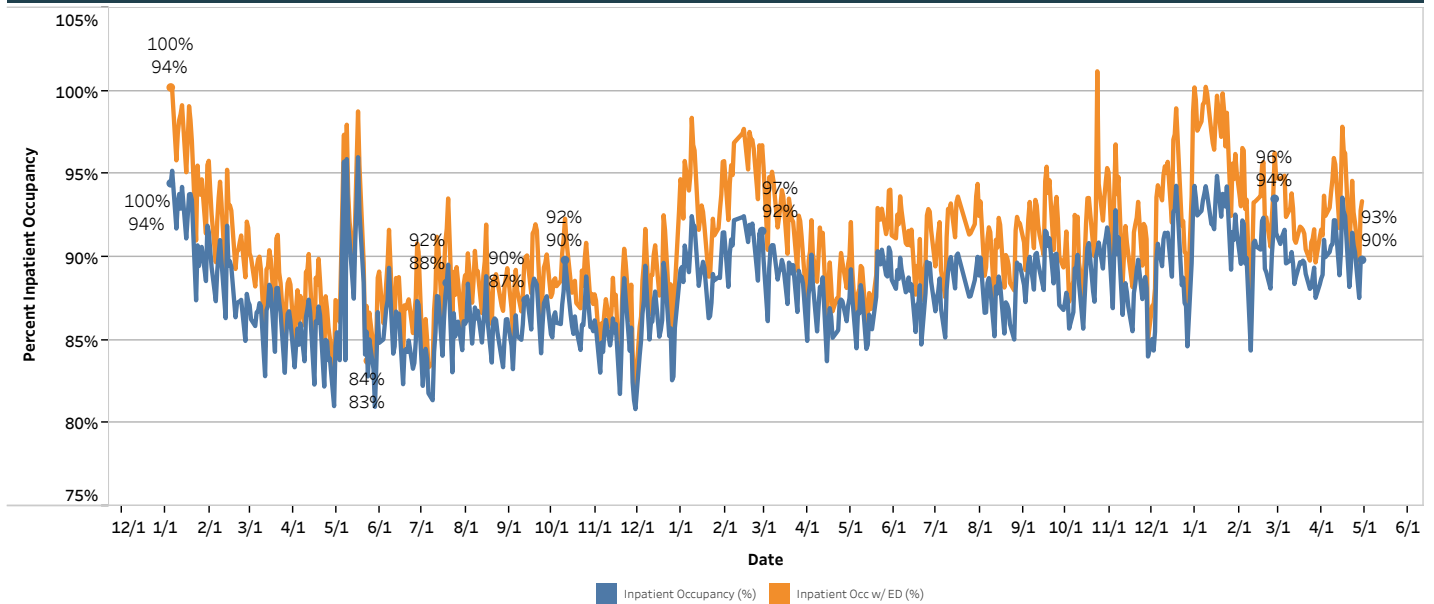
## Weekdays April 23 - April 29, 2026

### Hospital Census

	Staffed Bed Status				
	April 23	April 24	April 27	April 28	April 29
<b>Total Staffed Inpatient Beds Filled</b>	2,496	2,493	2,416	2,474	2,491
<b>Total Staffed Inpatient Beds Available*</b>	255	268	344	286	282
<b>Inpatient Occupancy</b>	90.7%	90.3%	87.5%	89.6%	89.8%
<b>Inpatient Occupancy with ED Holds**</b>	92.7%	92.1%	89.6%	92.8%	93.4%

Note:  
 \* Does not include available ED beds  
 \*\*Does not include behavioral health holds

### 2024 – 2026 Hospital Inpatient Capacity



### Emergency Department Holds

	April 23	April 24	April 27	April 28	April 29
<b>Non-Behavioral Health</b>	54	49	56	87	98
<b>Psych Adult ED Holds</b>	37	28	34	35	32
<b>Psych Pedi ED Holds</b>	10	11	7	6	5

Source: Juvare  
 30 hospitals reporting