

# NHA Hospital Capacity Situational Awareness Update

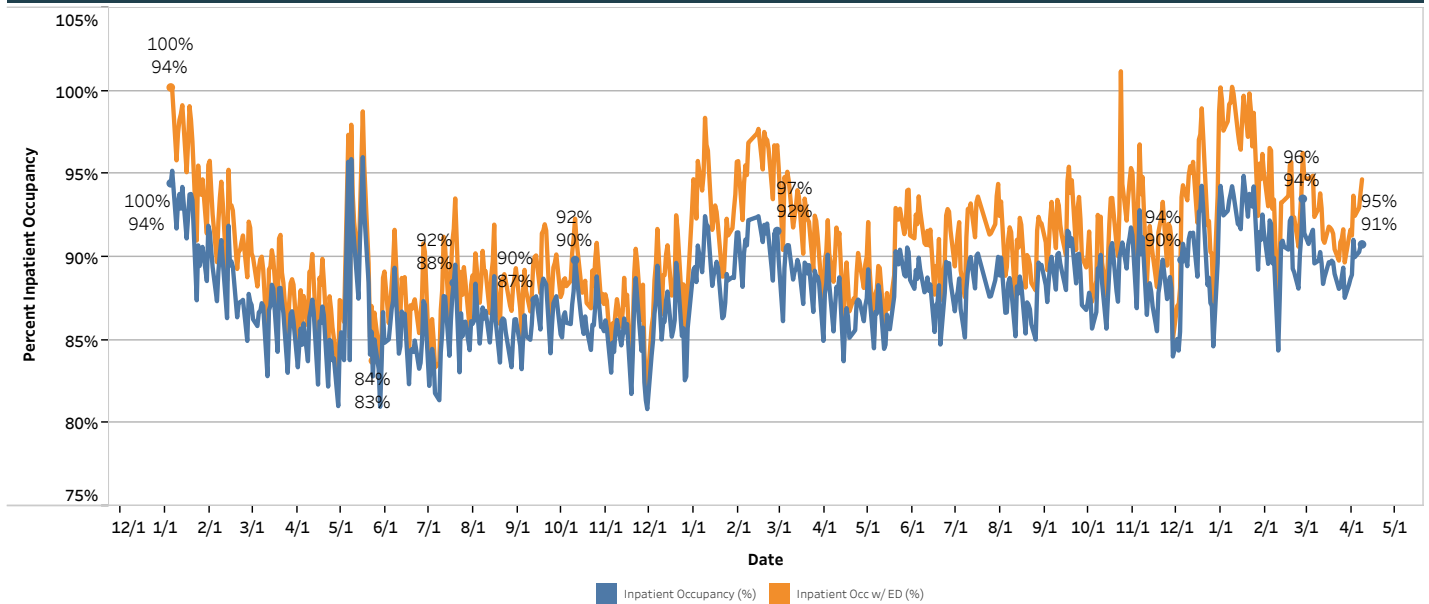
## Weekdays April 2 - April 8, 2026

### Hospital Census

	Staffed Bed Status				
	April 2	April 3	April 6	April 7	April 8
<b>Total Staffed Inpatient Beds Filled</b>	2,570	2,537	2,506	2,523	2,525
<b>Total Staffed Inpatient Beds Available*</b>	253	282	269	259	257
<b>Inpatient Occupancy</b>	91.0%	90.0%	90.3%	90.7%	90.8%
<b>Inpatient Occupancy with ED Holds**</b>	93.7%	92.5%	93.0%	93.9%	94.7%

Note:  
 \* Does not include available ED beds  
 \*\*Does not include behavioral health holds

### 2024 – 2026 Hospital Inpatient Capacity



### Emergency Department Holds

	April 2	April 3	April 6	April 7	April 8
<b>Non-Behavioral Health</b>	75	70	74	89	109
<b>Psych Adult ED Holds</b>	47	47	48	51	50
<b>Psych Pedi ED Holds</b>	8	11	11	11	10

Source: Juvare  
 30 hospitals reporting