

NHHA Hospital Capacity Situational Awareness Update

Weekdays December 25 - December 31, 2025

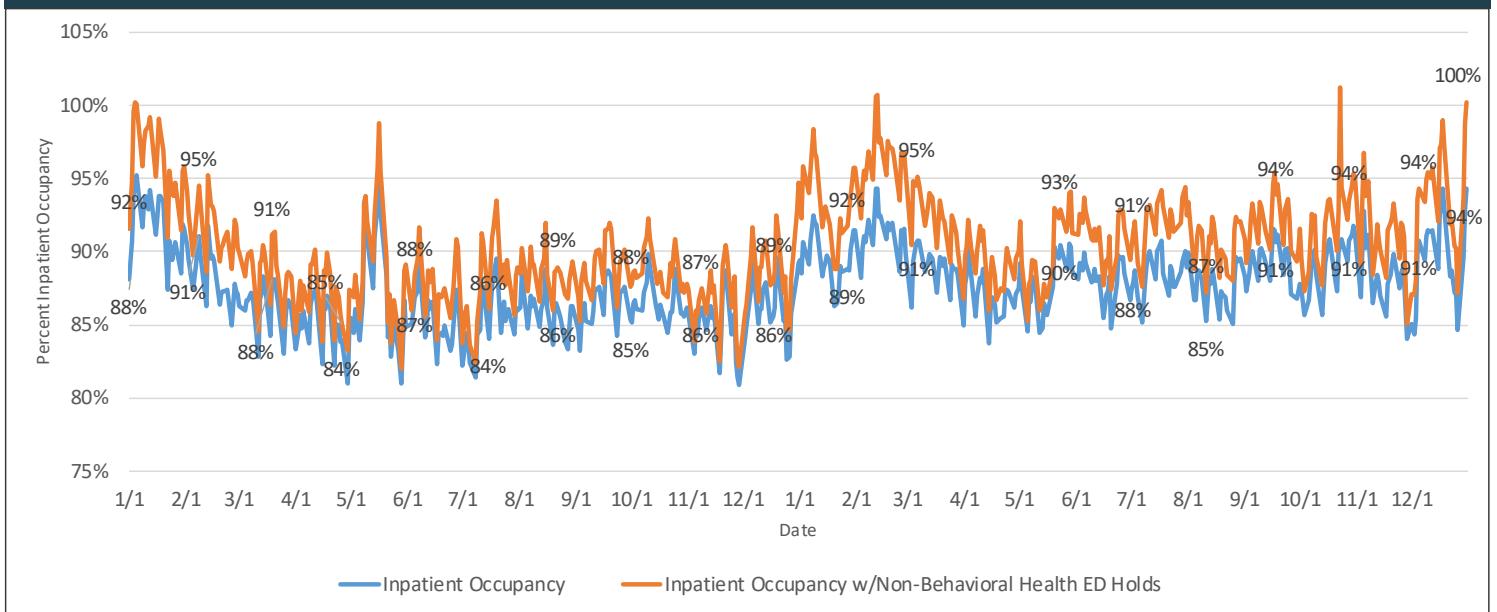
Hospital Census

Staffed Bed Status	December 25	December 26	December 29	December 30	December 31
Total Staffed Inpatient Beds Filled	2,436	2,339	2,509	2,574	2,623
Total Staffed Inpatient Beds Available*	362	425	290	198	159
Inpatient Occupancy	87.1%	84.6%	89.6%	92.9%	94.3%
Inpatient Occupancy with ED Holds**	90.2%	87.2%	93.7%	98.7%	100.2%

*Note: Does not include available ED beds

**Does not include behavioral health holds

2024 -2025 Hospital Inpatient Capacity



Emergency Department Holds

ED Hold Metric	December 25	December 26	December 29	December 30	December 31
Non-Behavioral Health	88	70	113	163	165
Adult Behavioral Health	22	26	32	30	28
Pediatric Behavioral Health	3	3	5	8	5

