

NHHA Hospital Capacity Situational Awareness Update

Weekdays January 1 - January 7, 2026

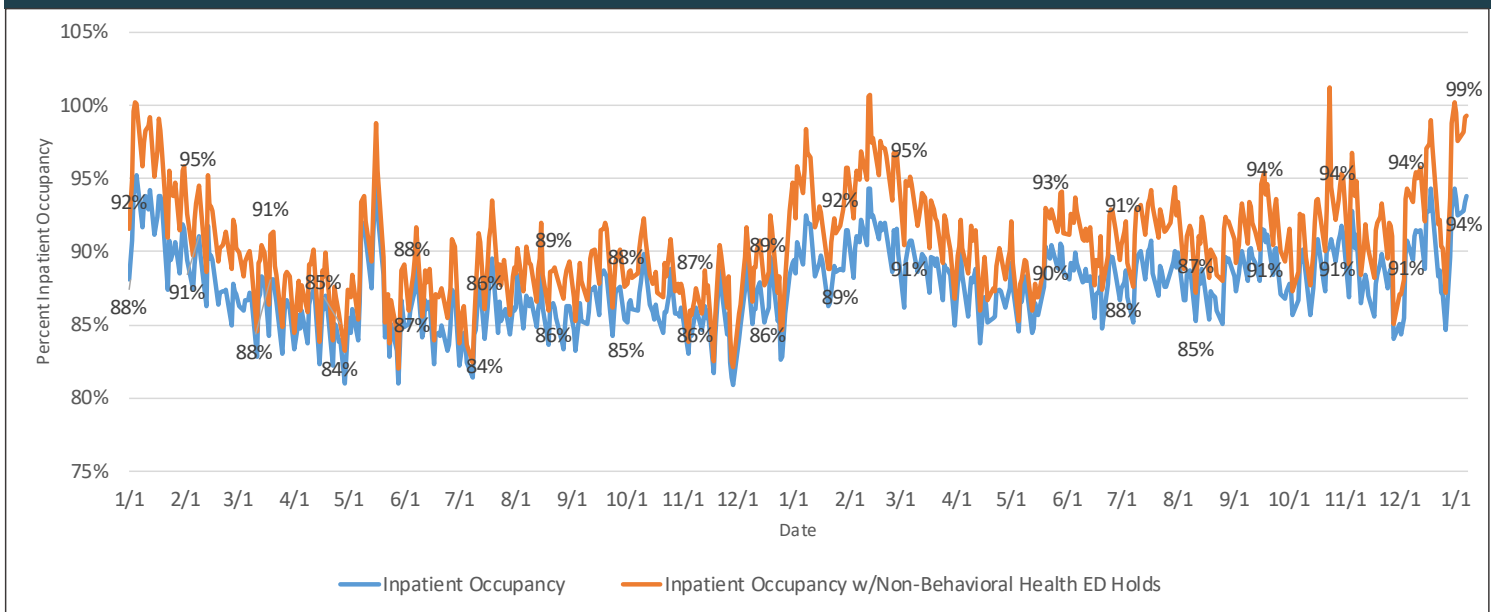
Hospital Census

Staffed Bed Status	January 1	January 2	January 5	January 6	January 7
Total Staffed Inpatient Beds Filled	2,603	2,555	2,584	2,610	2,636
Total Staffed Inpatient Beds Available*	179	207	201	184	174
Inpatient Occupancy	93.6%	92.5%	92.8%	93.4%	93.8%
Inpatient Occupancy with ED Holds**	99.5%	97.6%	98.2%	99.2%	99.3%

*Note: Does not include available ED beds

**Does not include behavioral health holds

2024 -2025 Hospital Inpatient Capacity



Emergency Department Holds

ED Hold Metric	January 1	January 2	January 5	January 6	January 7
Non-Behavioral Health	164	141	150	162	154
Adult Behavioral Health	29	32	41	42	45
Pediatric Behavioral Health	5	8	9	9	12

