

NHHA Hospital Capacity Situational Awareness Update

Weekdays December 11 - December 17, 2025

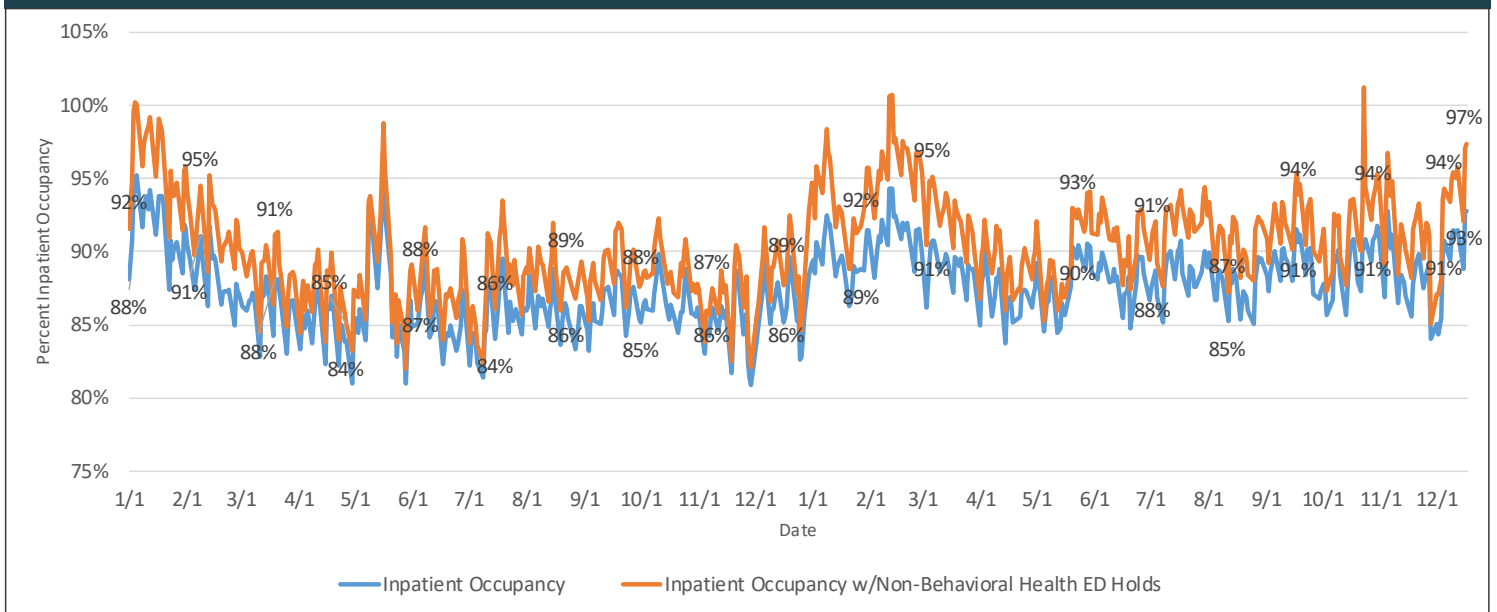
Hospital Census

Staffed Bed Status	December 11	December 12	December 15	December 16	December 17
Total Staffed Inpatient Beds Filled	2,591	2,595	2,542	2,654	2,665
Total Staffed Inpatient Beds Available*	244	242	320	208	206
Inpatient Occupancy	91.4%	91.5%	88.8%	92.7%	92.8%
Inpatient Occupancy with ED Holds**	95.1%	95.7%	92.1%	97.1%	97.4%

*Note: Does not include available ED beds

**Does not include behavioral health holds

2024 -2025 Hospital Inpatient Capacity



Emergency Department Holds

ED Hold Metric	December 11	December 12	December 15	December 16	December 17
Non-Behavioral Health	104	121	93	124	131
Adult Behavioral Health	38	37	42	36	32
Pediatric Behavioral Health	13	10	4	4	6

