

NHHA Hospital Capacity Situational Awareness Update

Weekdays October 30 - November 5, 2025

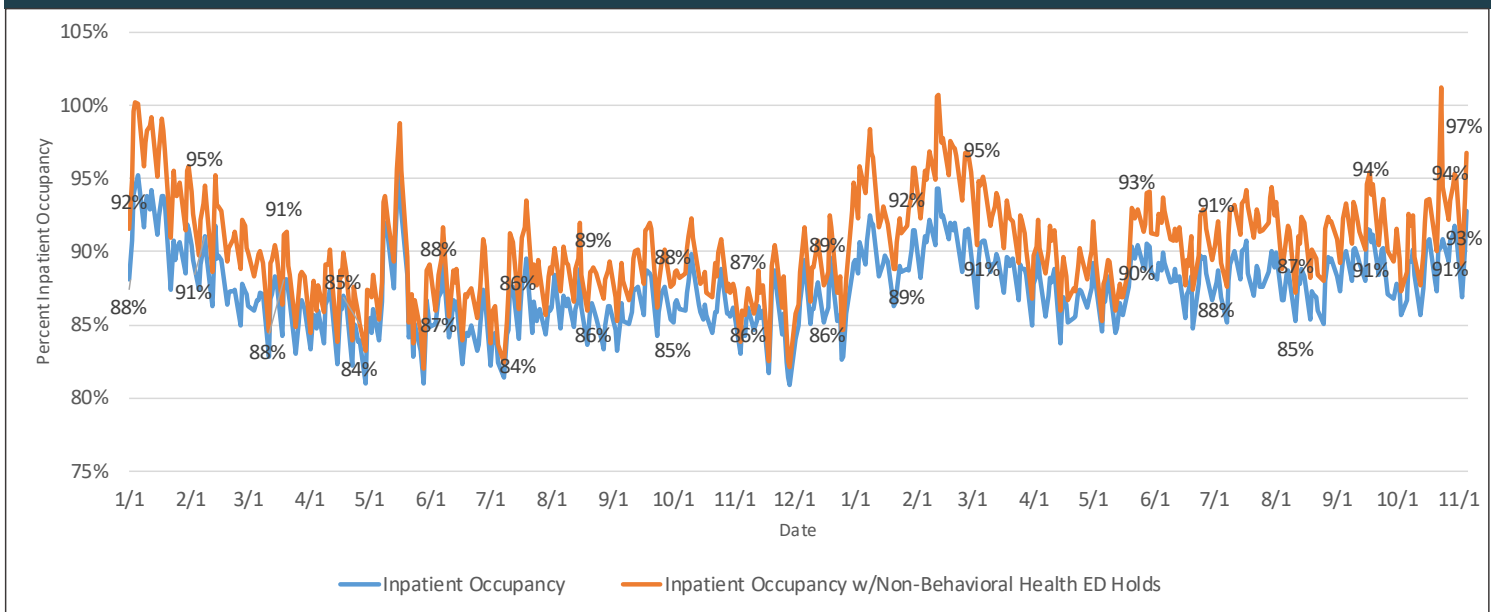
Hospital Census

Staffed Bed Status	October 30	October 31	November 3	November 4	November 5
Total Staffed Inpatient Beds Filled	2,592	2,574	2,426	2,526	2,598
Total Staffed Inpatient Beds Available*	232	245	365	274	201
Inpatient Occupancy	91.8%	91.3%	86.9%	90.2%	92.8%
Inpatient Occupancy with ED Holds**	95.4%	95.1%	89.1%	93.7%	96.8%

*Note: Does not include available ED beds

**Does not include behavioral health holds

2024 -2025 Hospital Inpatient Capacity



Emergency Department Holds

ED Hold Metric	October 30	October 31	November 3	November 4	November 5
Non-Behavioral Health	101	107	62	97	111
Adult Behavioral Health	39	33	31	28	25
Pediatric Behavioral Health	14	17	7	6	8

