

NHHA Hospital Capacity Situational Awareness Update

Weekdays September 19 - 25, 2024

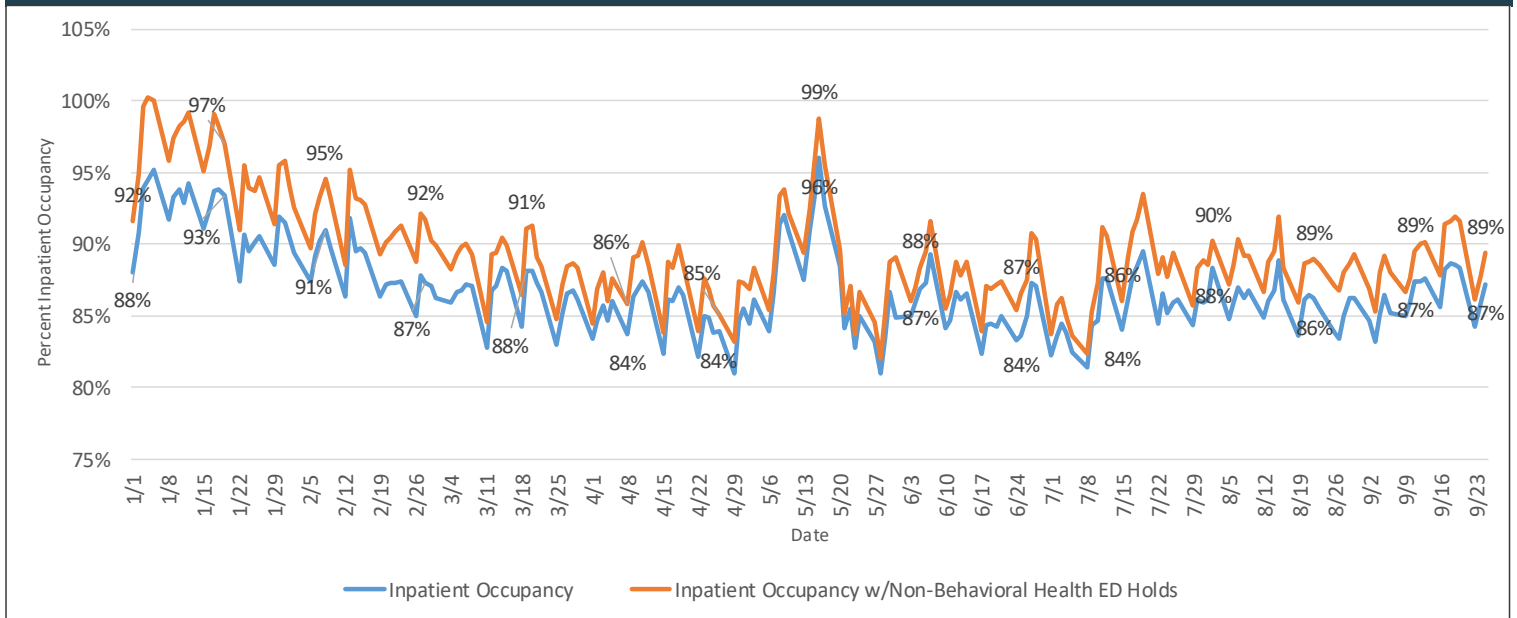
Hospital Census

Staffed Bed Status	September 19	September 20	September 23	September 24	September 25
Total Staffed Inpatient Beds Filled	2,537	2,524	2,410	2,471	2,512
Total Staffed Inpatient Beds Available*	329	333	452	406	368
Inpatient Occupancy	88.5%	88.3%	84.2%	85.9%	87.2%
Inpatient Occupancy with ED Holds**	92.0%	91.6%	86.2%	87.8%	89.4%

*Note: Does not include available ED beds

**Does not include behavioral health holds

2024 Hospital Inpatient Capacity



Emergency Department Holds

ED Hold Metric	September 19	September 20	September 23	September 24	September 25
Non-Behavioral Health	99	93	56	55	62
Adult Behavioral Health	30	31	38	42	48
Pediatric Behavioral Health	5	7	17	15	12

Source: Juvare
30 hospitals reporting

